

BAT

COMPASS

3.4 Acre Compound Opportunity  
*Historic Elegance with Modern Luxury*



124 SOUTH COUNTRY ROAD, REMSENBERG

## Prestigious Remsenburg Compound – Historic Elegance with Modern Luxury

Set along one of Remsenburg's most prestigious lanes, this 3.4-acre estate presents a rare opportunity to own a piece of Hamptons history, beautifully reimagined for modern living. The offering includes a 7,547 sq. ft. residence on 1.3 acres plus an adjacent 2.1-acre single and separate lot with full building rights—providing endless potential for expansion or investment.





## Main House

Originally built in 1877 and completely renovated and expanded in 2008, the home retains its timeless character while incorporating all-new infrastructure, including updated electric, plumbing, and heating/cooling systems.



## Main Living Spaces

The interiors are designed for both grand entertaining and everyday comfort. A gracious foyer leads to a formal living room with fireplace and built-ins, and a light-filled family room that opens to the gardens through multiple French doors

## Kitchen & Dining Areas

The gourmet kitchen serves as the heart of the home, featuring an expansive island, sitting area, fireplace with pizza oven, and butler's pantry. Just beyond there is a formal dining room and a screened porch with a dramatic brick fireplace frames sweeping views of the private grounds.





### Primary Suite

The luxurious primary suite offers a fireplace, spa bath with soaking tub, and an oversize dressing room.



Five Additional Upstairs Guest Bedrooms



Lower Level



## Outdoor Living

The outdoor setting is equally impressive, highlighted by a heated gunite pool with bluestone patio, beautifully landscaped grounds, and a rare historic windmill.



## Historic Barn

A charming barn includes a two-car garage, attached cabana, and unfinished second floor framed for additional living space.



## FEATURES & AMENITIES

### General:

- 3.4 acres total
  - 1.3 acres with main house
  - 2.1-acre adjacent single/separate lot with building rights
- 7,547 sq ft main house
- Iconic home built in 1877 with a complete renovation and expansion done in 2008
- Modern conveniences including new electric, plumbing, and heating/cooling systems
- Rare historic windmill
- Mature landscaping
- Parklike grounds
- Location: 3.5 miles to Westhampton Beach Main Street, ~75 miles to NYC

### Barn:

- Two-car garage
- Attached cabana
- Unfinished second floor (framed for additional living space)

### First Level:

- Large foyer
- Formal living room with fireplace and built-ins
- Formal dining room (seating for 12)
- Family room with multiple French doors to gardens
- Den/office
- Gourmet kitchen with xpansive island
- Fireplace with separate pizza oven
- Sitting area
- Butler's pantry
- Screened porch with large brick fireplace
- 

### Second Level:

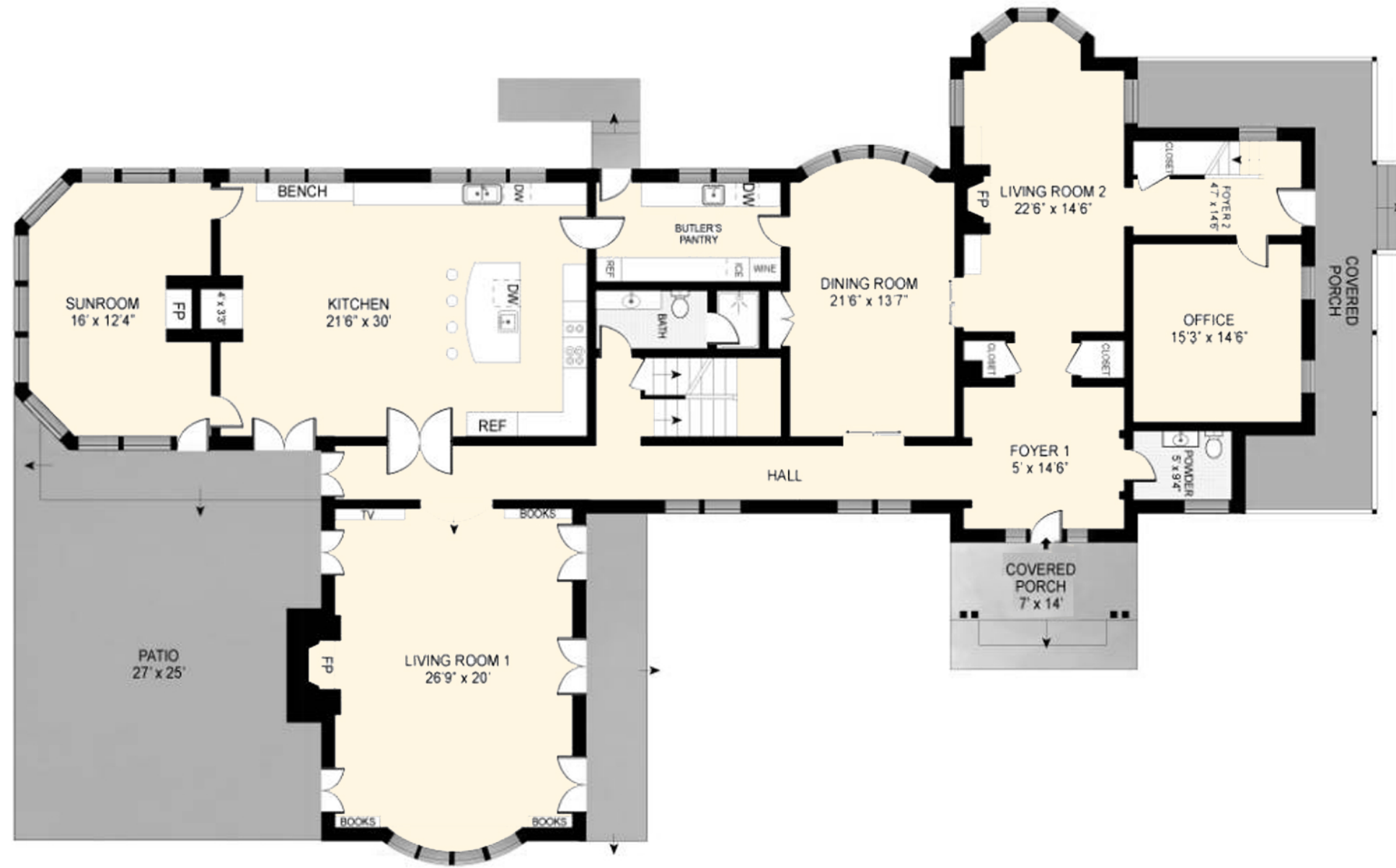
- Primary suite with spa bath (soaking tub, water closet, separate shower, radiant heat), dressing room, sitting area with fireplace
- Guest wing with two en suite bedrooms
- 4 guest bedrooms
- Laundry room

### Lower Level:

- Recreation Area
- Gym



First Floor



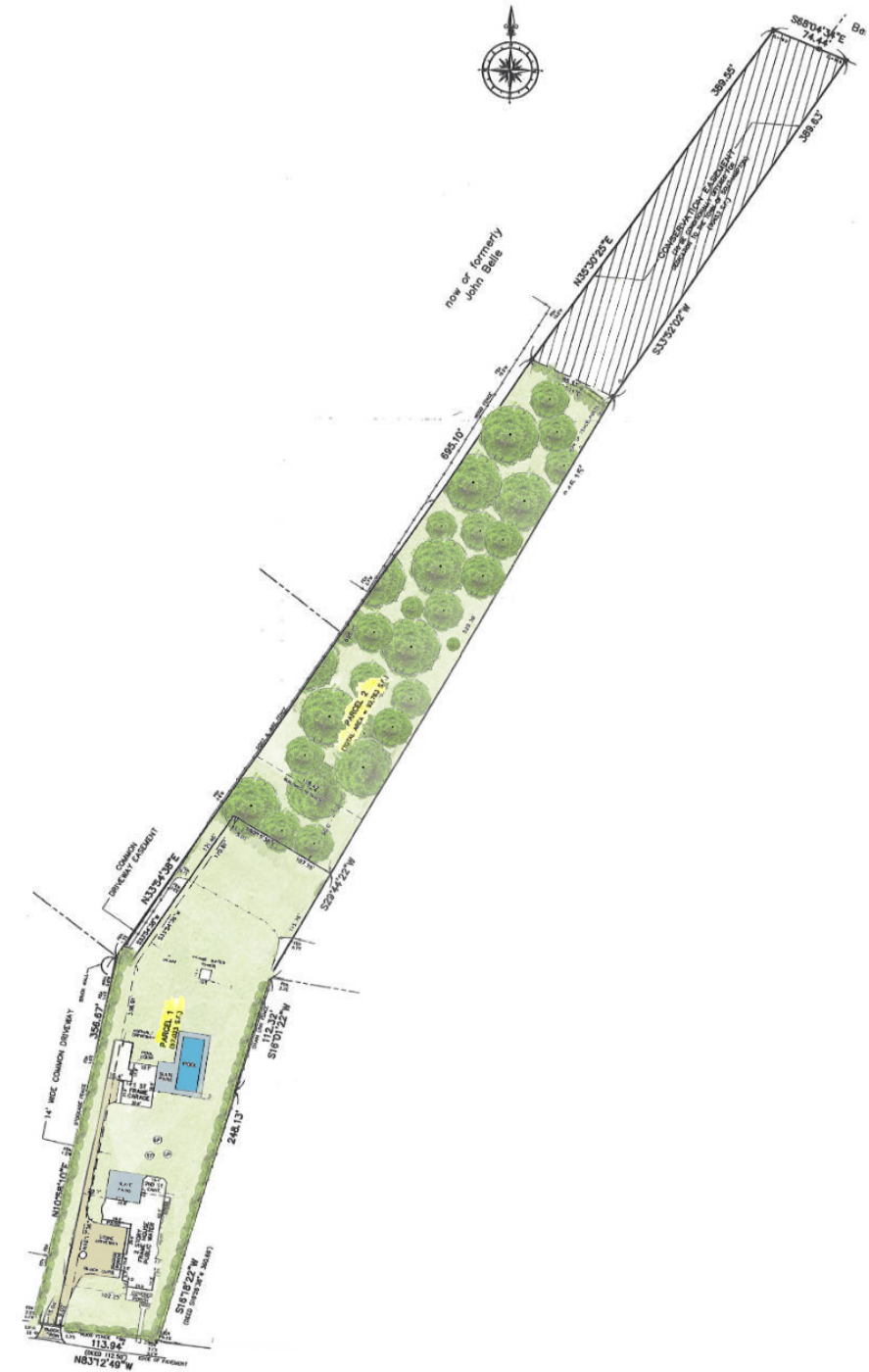
Second Floor



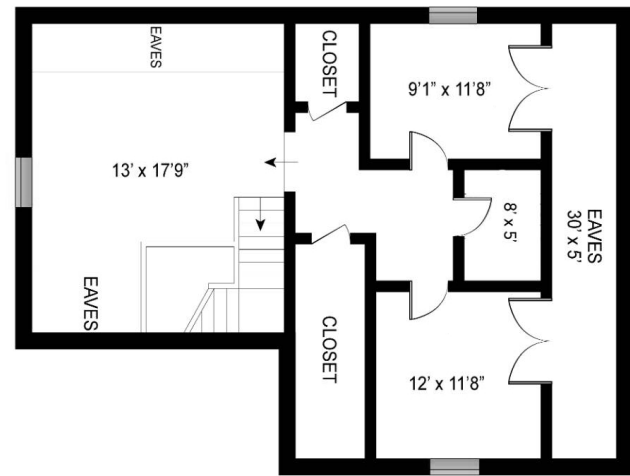
Barn First Level



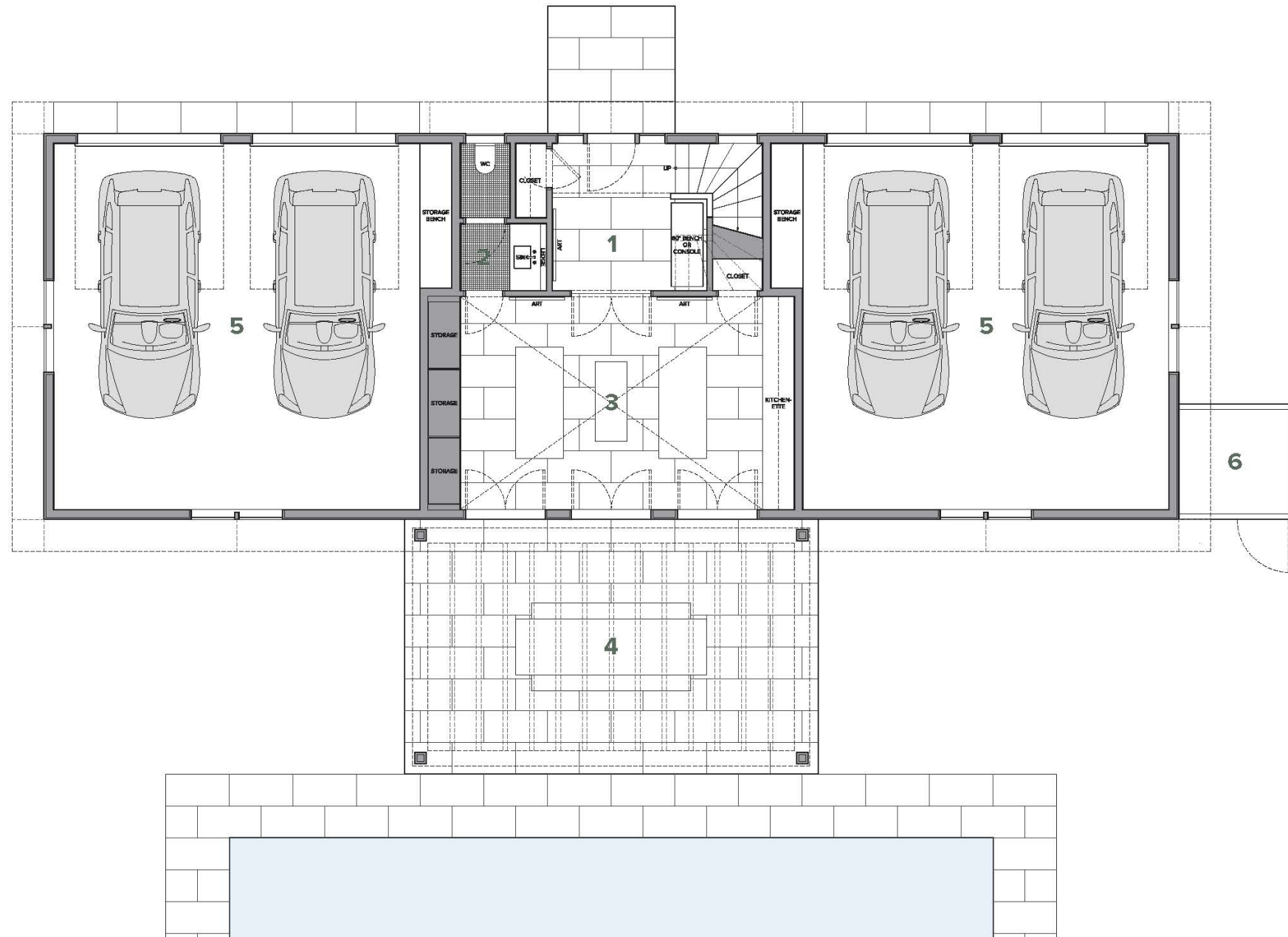
Survey



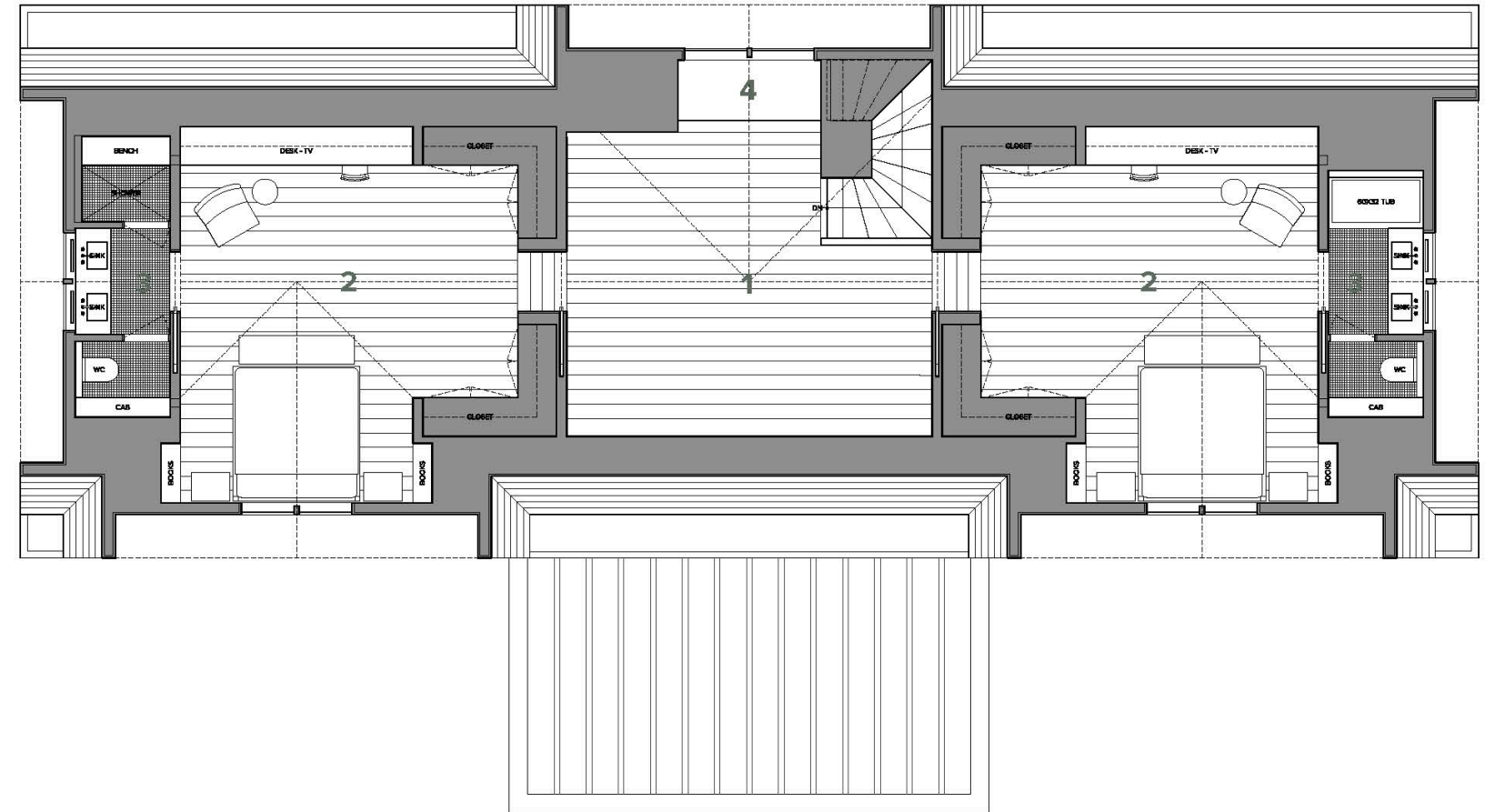
Barn Second Level



Plans to Update the Barn - First Floor



Plans to Update the Barn - Second Floor





631.255.6221

[bat@compass.com](mailto:bat@compass.com)

[www.breitenbachadvisory.com](http://www.breitenbachadvisory.com)

Breitenbach Advisory Team is a team of real estate agents affiliated with Compass, a licensed real estate broker and abides by Equal Housing Opportunity laws. All material presented herein is intended for informational purposes only. Information is compiled from sources deemed reliable but is subject to errors, omissions, changes in price, condition, sale, or withdrawal without notice. This is not intended to solicit property already listed. Photos may be virtually staged or digitally enhanced and may not reflect actual property conditions.